

# Current Cigarette Smoking in Mississippi

---

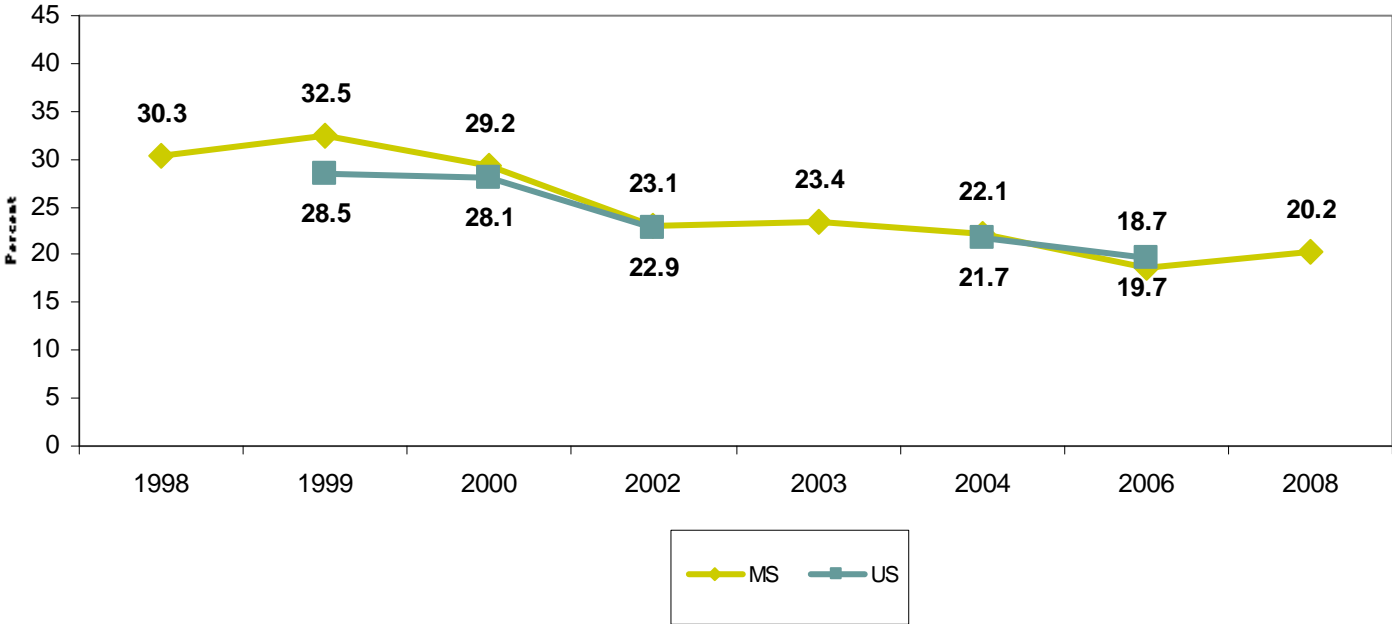
This report presents trends in current smoking and cigarette consumption from the Youth Risk Behavior Surveillance System, the Youth Tobacco Survey, the Social Climate Survey of Tobacco Control, the Behavioral Risk Factor Surveillance System, the Tobacco Use Supplement to the Current Population Survey, and the Tax Burden on Tobacco.

## Youth Tobacco Survey - YTS

The Youth Tobacco Survey (YTS) was developed by the Centers for Disease Control and Prevention to provide states with the data needed to design, implement, and evaluate comprehensive tobacco control programs that work to prevent young people from beginning tobacco use and help those who have already started using tobacco to quit. The YTS collects data from young people in grades 6 through 12. Both public and private schools are eligible for inclusion (although private schools have not been included in recent YTS administrations). Schools are randomly selected with probability proportional to enrollment size, and classrooms are chosen at random within the selected schools. All students in these selected classes are eligible to participate. Only one class period is required to administer the survey. The self-administered questionnaire is anonymous. States administer a core survey and have the option of adding questions to the survey. These data provide information on many key tobacco-related intermediate and long-term indicators, allowing states to measure progress toward state and national goals and objectives. For example, YTS data increase our understanding of the influence of pro-tobacco marketing, advertising, and products on young people and conversely, of the effects of anti-tobacco campaigns working to counter them. Further, due to its methodology, a state can directly compare its YTS data both to those collected in another state as well as to national data. The Youth Tobacco Survey was conducted in Mississippi in Spring 1998, Spring 1999, Spring 2000, Fall 2002, Fall 2003, Fall 2004, Fall 2006, and Spring 2008. The National YTS was administered in 1999, 2000, 2002, 2004, and 2006.

This report was produced by scientists at the Social Science Research Center of Mississippi State University. This project is funded by a grant of the Mississippi State Department of Health. Any opinions implied or expressed here are those of the authors and do not necessarily reflect those of the Mississippi State Department of Health or of Mississippi State University.

### Public High School Students - YTS

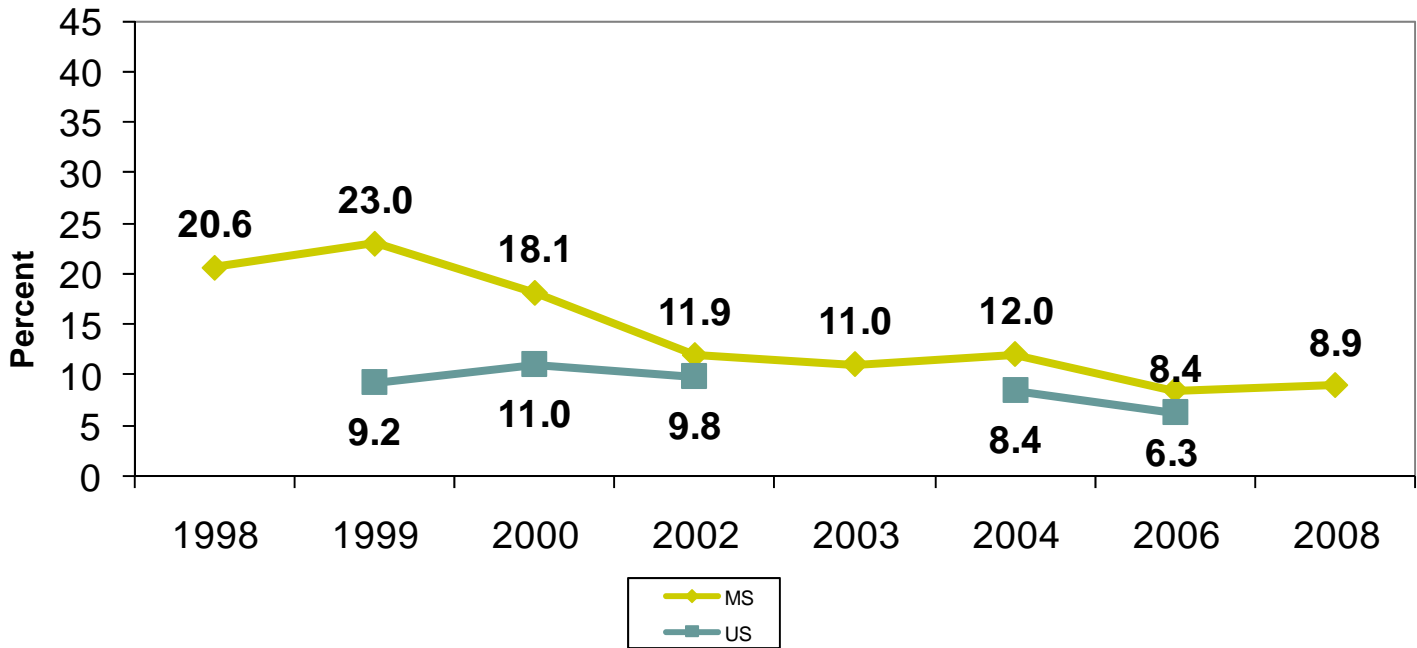


Data for Mississippi are available for 1998, 1999, 2000, 2002, 2003, 2004, 2006, and 2008.  
Data for US are available for 1999, 2000, 2002, 2004, and 2006.

In 1998, the number of high school students smoking was 30.3%. Since 1998, the number of Mississippi high school students smoking has decreased. This trend mirrors the decrease in national smoking among US high school students.

---

## Public Middle School Students - YTS

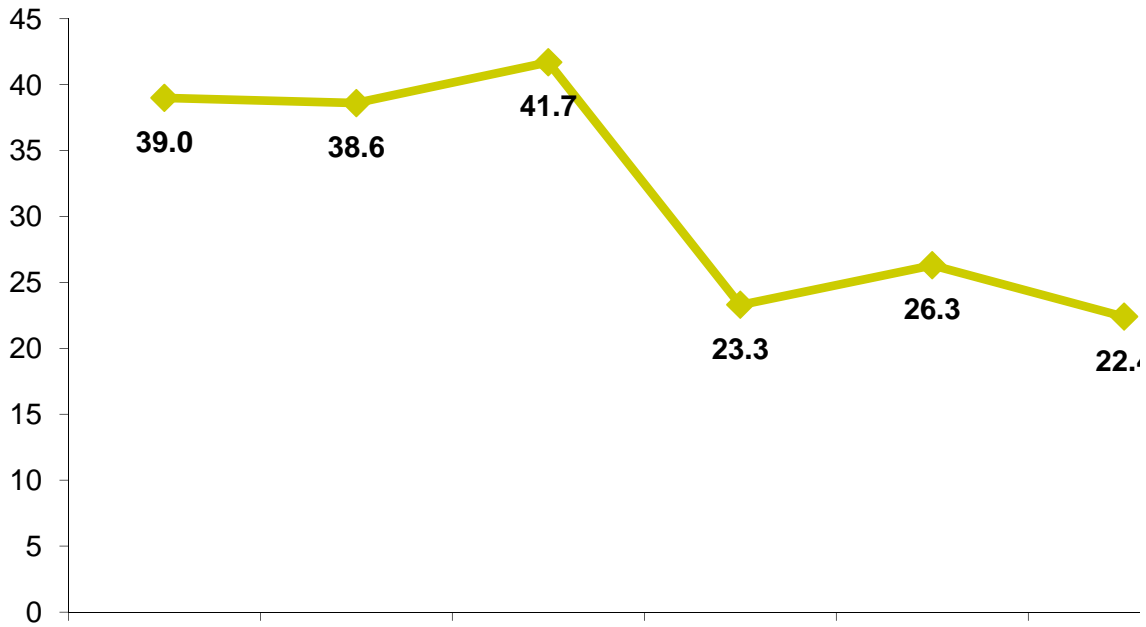


Data for Mississippi are available for 1998, 1999, 2000, 2002, 2003, 2004, 2006 and 2008.  
Data for US are available for 1999, 2000, 2002, 2004, and 2006.

In 1999, the number of Mississippi public middle school smokers, 23%, was much higher than the national average of 9.2%. By 2006, the gap between the US and Mississippi public middle school smokers had decreased, with the number of Mississippi public middle school smokers at 8.4% and the number of US public middle school smokers at 6.3%.

---

## Mississippi Private High Schools-YTS

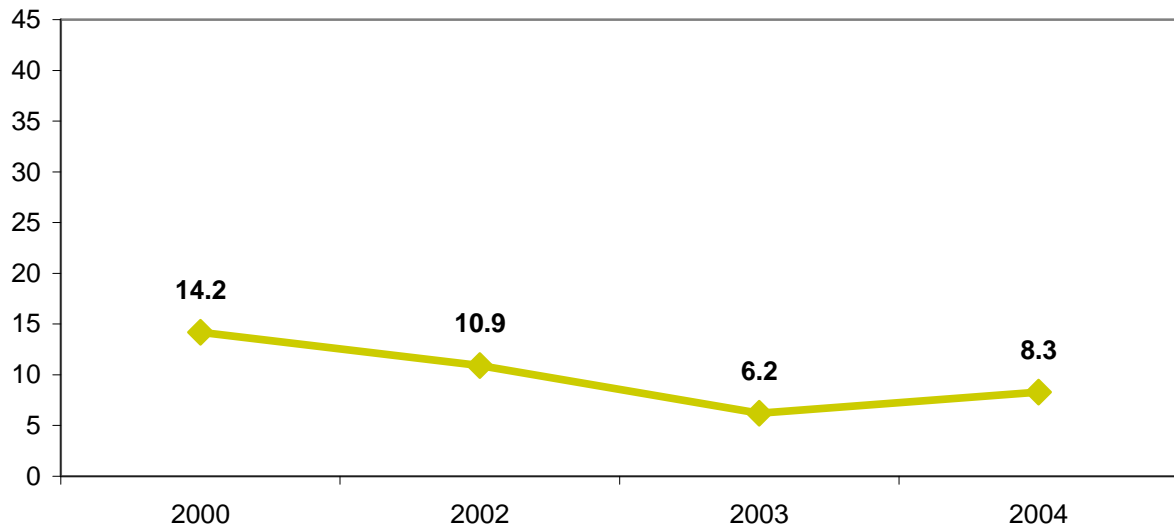


The National YTS is not administered to private high school students.  
Data for Mississippi are available for 1998, 1999, 2000, 2002, 2003 and 2004.

Between 1998 and 2000, the prevalence of smoking among Mississippi private high schools students was between 38.6% and 41.7%. After 2000, the prevalence of smoking decreased significantly to 23.3%.

---

### Mississippi Private Middle Schools - YTS



Data for the Mississippi private middle schools are available for 2000, 2002, 2003 and 2004.

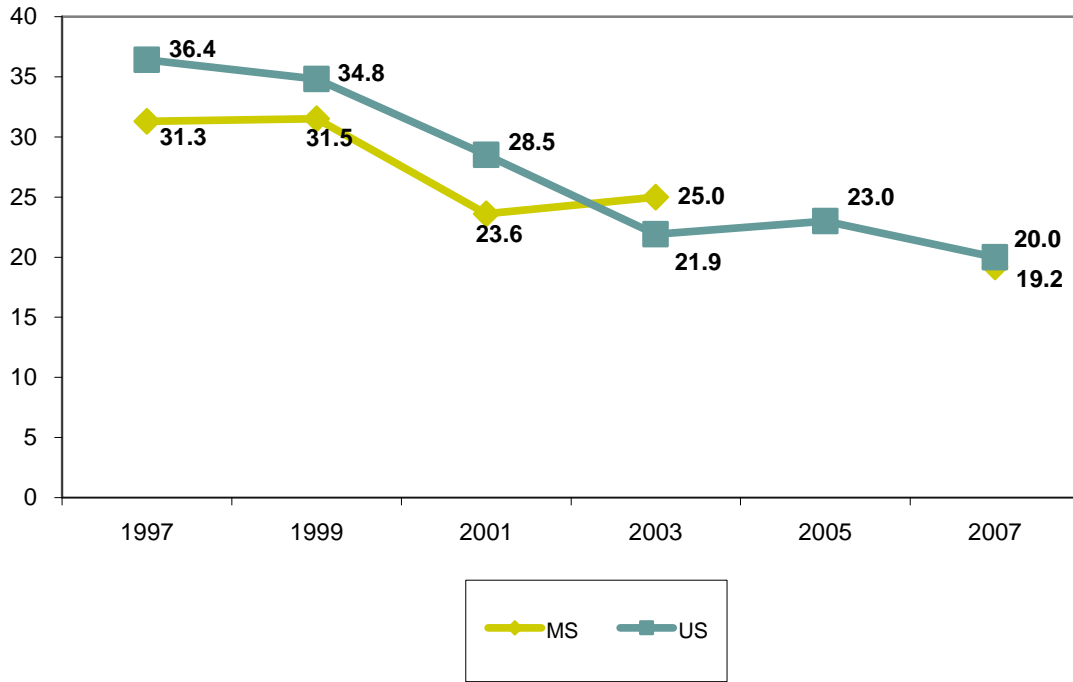
The percent of Mississippi private middle school students who were current smokers decreased by almost half since 2000. In 2000, 14.2% of students were smokers and 8.3% of students were smokers in 2004.

---

## **Youth Risk Behavior Surveillance System - YRBSS**

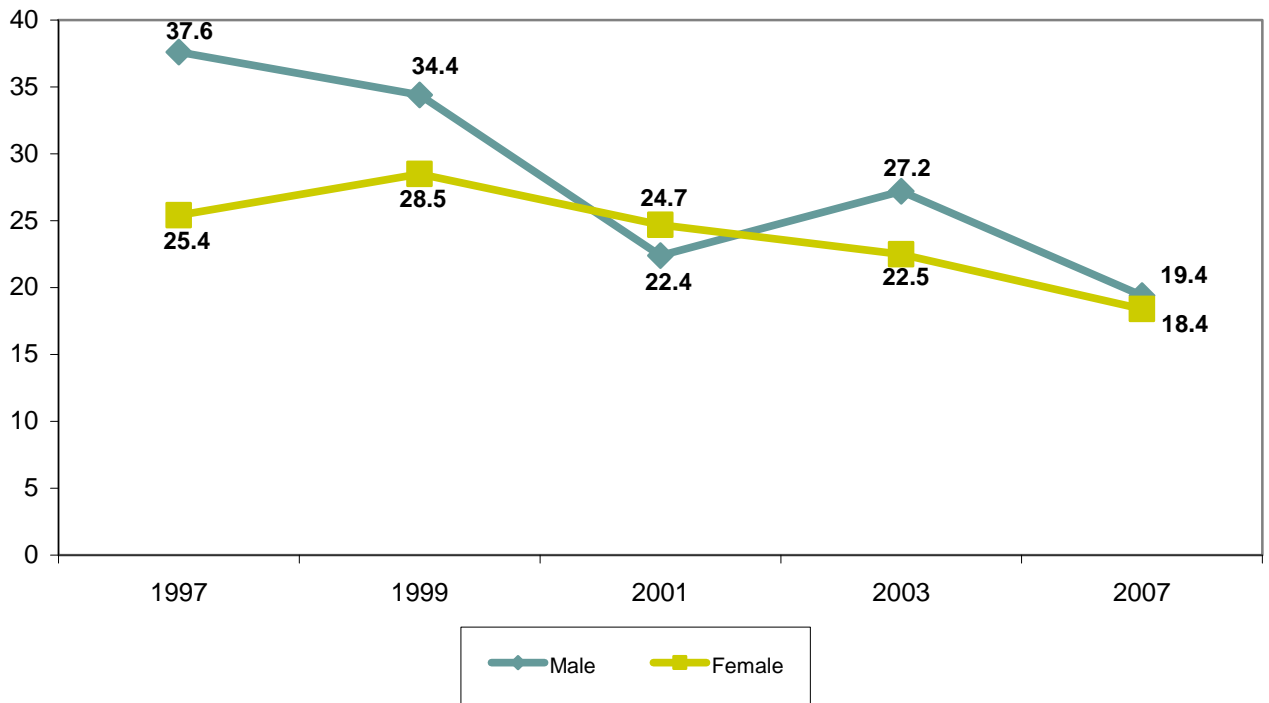
The Youth Risk Behavior Surveillance System (YRBSS) was designed in 1990 to determine the prevalence of health risk behaviors such as tobacco use, unhealthy dietary behaviors, inadequate physical activity, alcohol and drug use, sexual behaviors contributing to unintended pregnancy and sexually transmitted diseases, and behaviors contributing to unintended injuries and violence. The YRBSS is intended to assess whether health risk behaviors increase, decrease, or stay the same over time, as well as examining the co-occurrence of health risk behaviors. The YRBSS provides comparable national and state data among subpopulations of youth. The YRBSS includes national and state school-based surveys of representative samples of 9<sup>th</sup> through 12<sup>th</sup> grade students. These surveys are conducted every two years, usually during the spring semester. The national survey, conducted by the Centers for Disease Control and Prevention (CDC), provides data representative of high school students in public and private schools in the United States. The state surveys, conducted by departments of health and education, provide data representative of the state. The YRBSS data are provided for 1991, 1993, 1995, 1997, 1999, 2001, 2003, 2005, and 2007 (the 2005 survey was not administered in Mississippi due to Hurricane Katrina).

### Public High Schools - YRBSS



Between 1997 and 2003, the prevalence of smoking among public high school students nationwide and among Mississippi students followed similar decreasing trend lines. Although the YRBS was not administered in 2005, it appears that the state and national trends remain similar.

### Mississippi Public High Schools By Gender - YRBSS



In 1997, male public high school students in Mississippi were much more likely than females to smoke. However, this gap disappeared in 2001. In 2007, the prevalence of current smoking was the same among male and female students.

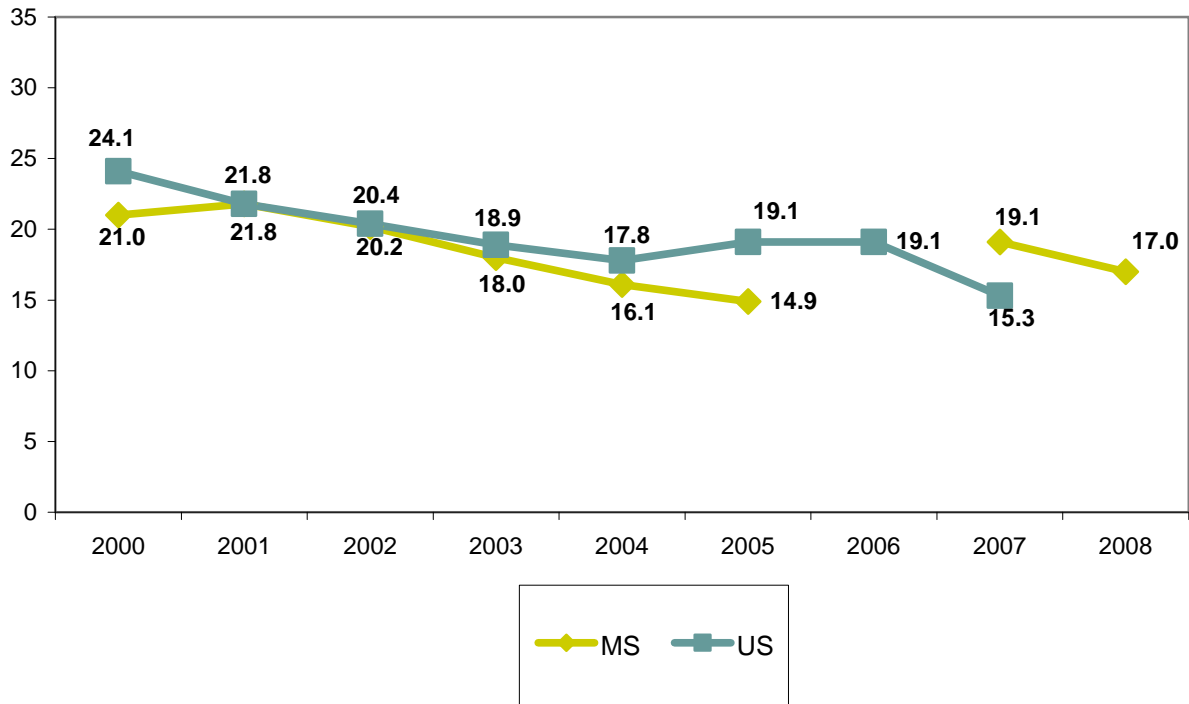
---

## Mississippi Social Climate Survey of Tobacco Control

Although comprehensive tobacco control programs have moved toward logic models that incorporate political and social intermediate objectives such as smoke-free worksites, tobacco control planning and evaluation has been hampered by the lack of timely, comprehensive data about the attitudes and practices of U.S. adults. The Social Climate Survey of Tobacco Control (SCS-TC) was developed as a methodology to objectively measure the fundamental position of tobacco control in society and thereby provide a data collection system to monitor program impacts. The survey includes items to measure progress toward intermediate objectives such as policy changes, changes in social norms, reductions in exposure of individuals to environmental tobacco smoke, and rejection of pro-tobacco influences.

The Social Climate Survey of Tobacco Control (SCS-TC) was administered to representative samples of Mississippi adults and U.S. adults who were interviewed by telephone in 2000, 2001, 2002, 2003, 2004, 2005, 2006, 2007, and 2008 (the SCS-TC was not administered to a Mississippi sample in 2006, and the 2008 National SCS-TC will be administered later this summer). Samples from all years represent the civilian, non-institutionalized adult population over age 18. Households were selected using random digit dialing procedures to include households with unlisted numbers. Once a household was contacted, the adult to be interviewed was selected by asking to speak with the person in the household who is 18 years of age or older and who will have the next birthday. Five attempts were made to contact those selected adults who were not home. The sample was weighted by race and gender, based on the most current U.S. Census estimates.

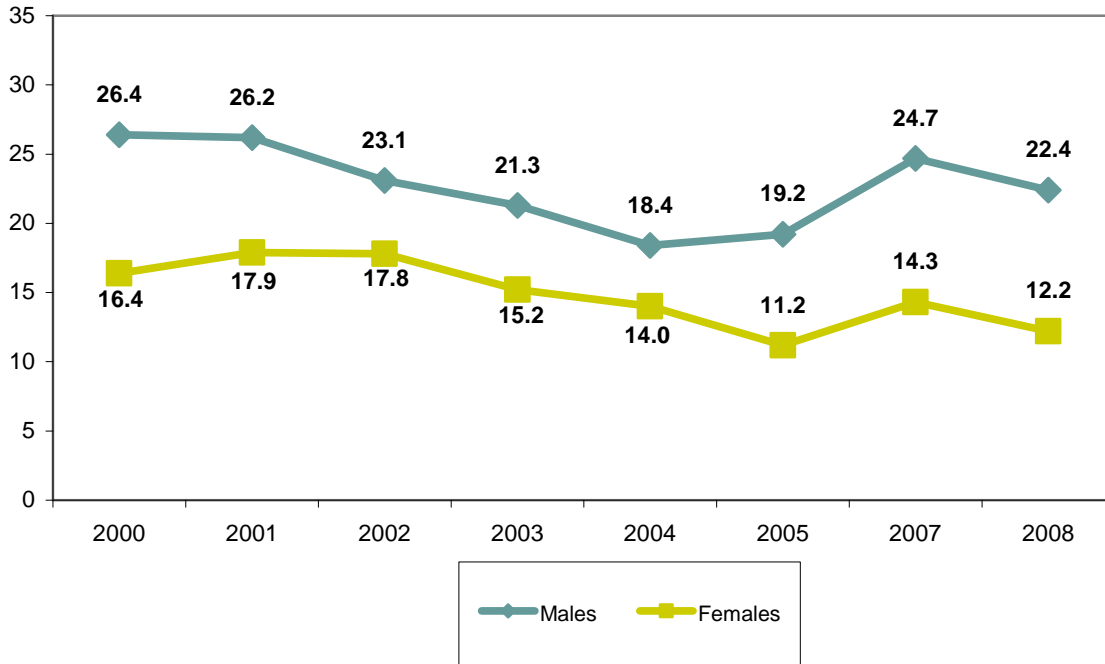
### Current Adult Smokers, Mississippi and United States -Social Climate Survey



Data from the Social Climate Survey of Tobacco Control indicate similar trends for current smoking among Mississippi and the United States adults.

---

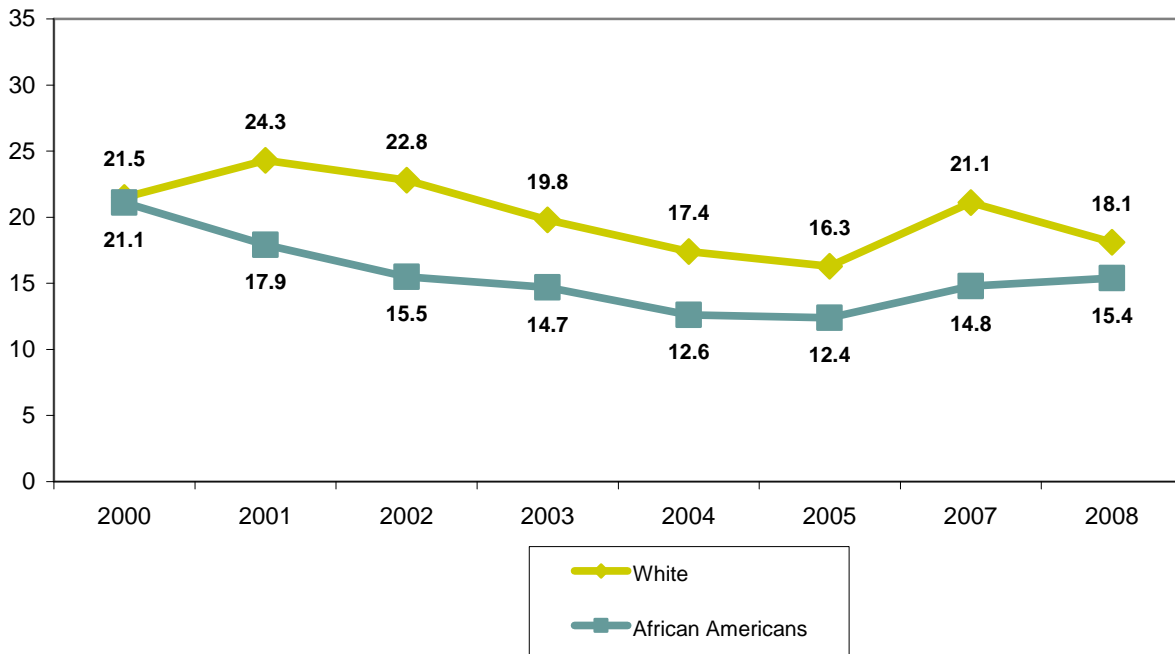
### Current Adult Smokers By Gender - Mississippi Social Climate Survey



The prevalence of current smoking among males is higher than that among females from 2000-2008, and the trend patterns tend to mirror one another.

---

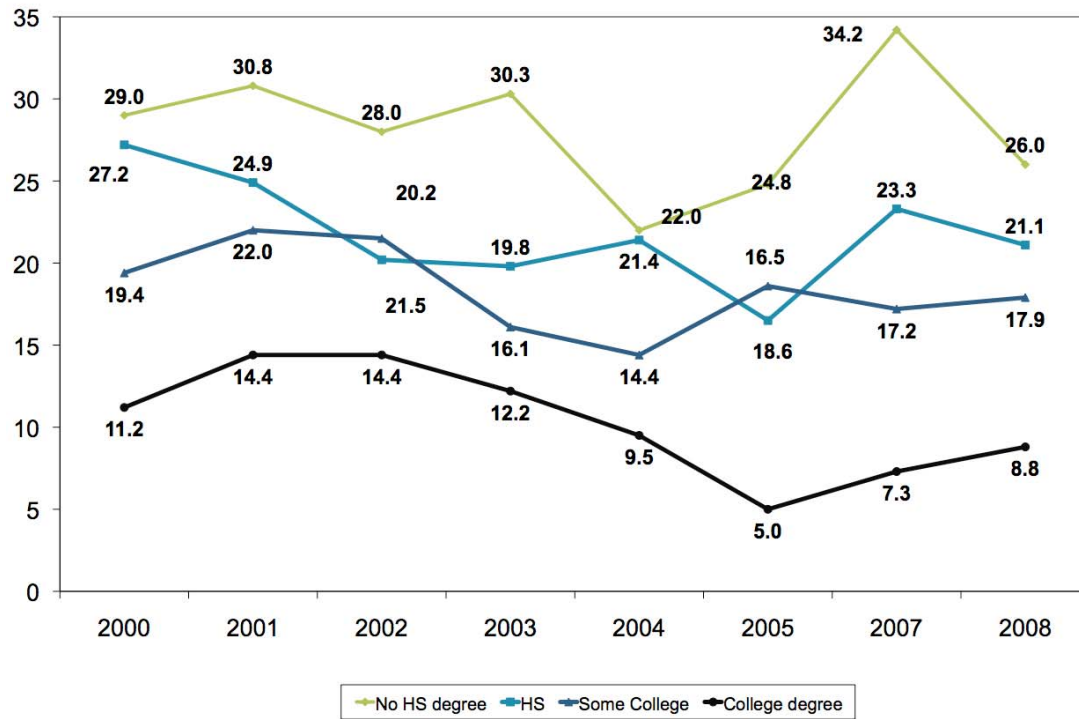
### Current Adult Smokers By Race - Mississippi Social Climate Survey



In all years, African Americans were less likely to be current smokers than white adults in Mississippi. However, this difference was not statistically significant in all years.

---

### Current Adult Smokers By Education Level - Mississippi Social Climate Survey



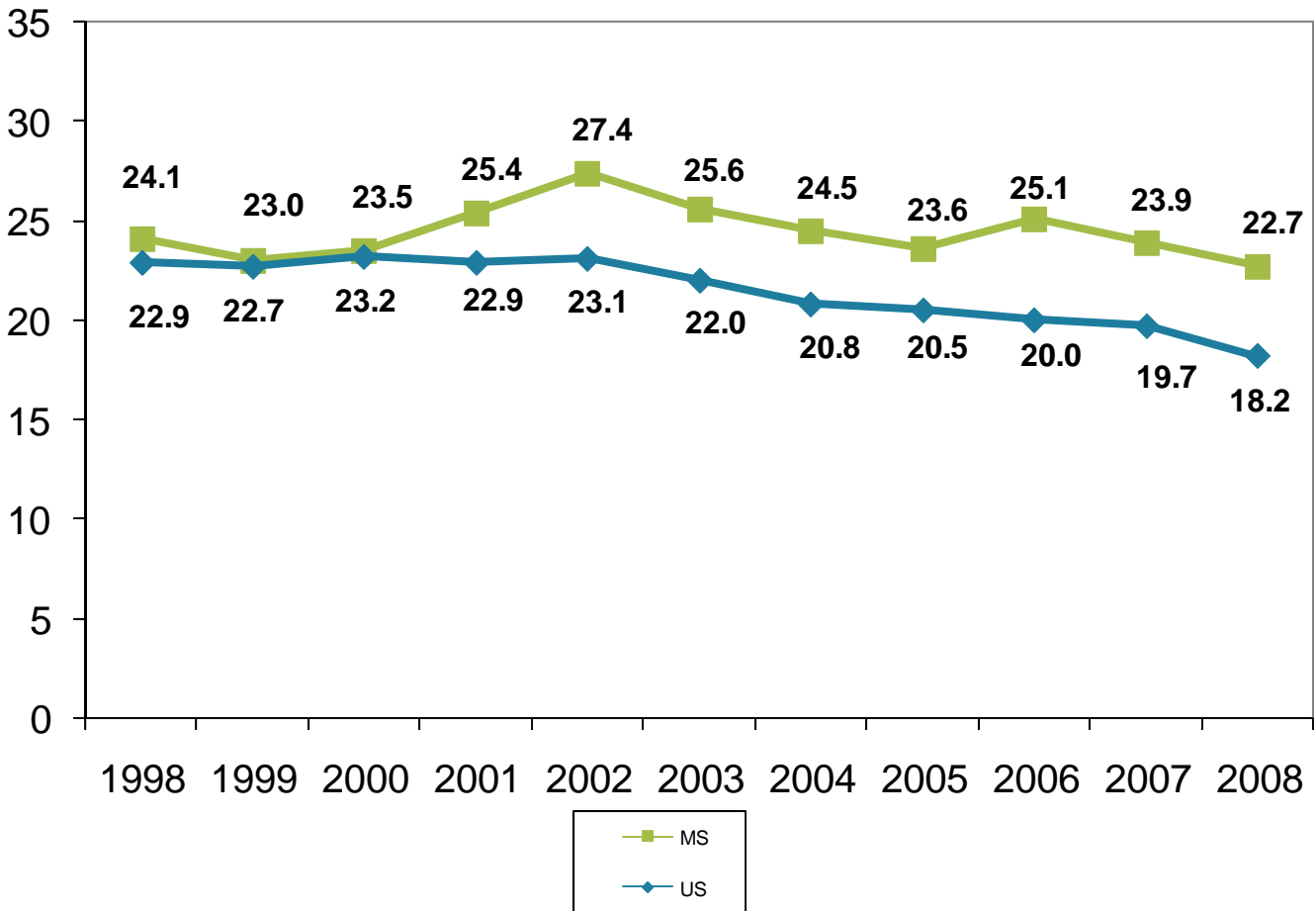
Adults with the least amount of education were the most likely to smoke, and adults with the college degrees were the least likely to smoke. This was true for all years.

## **Behavioral Risk Factor Surveillance System**

The Behavioral Risk Factor Surveillance System (BRFSS) is a state-based system of health surveys that were developed and conducted in order to monitor state-level prevalence of the major behavioral risks among adults associated with premature morbidity and mortality. The basic philosophy was to collect data on actual behaviors, rather than attitudes or knowledge, that would be particularly useful for planning, initiating, supporting, and evaluating health promotion and disease prevention programs.

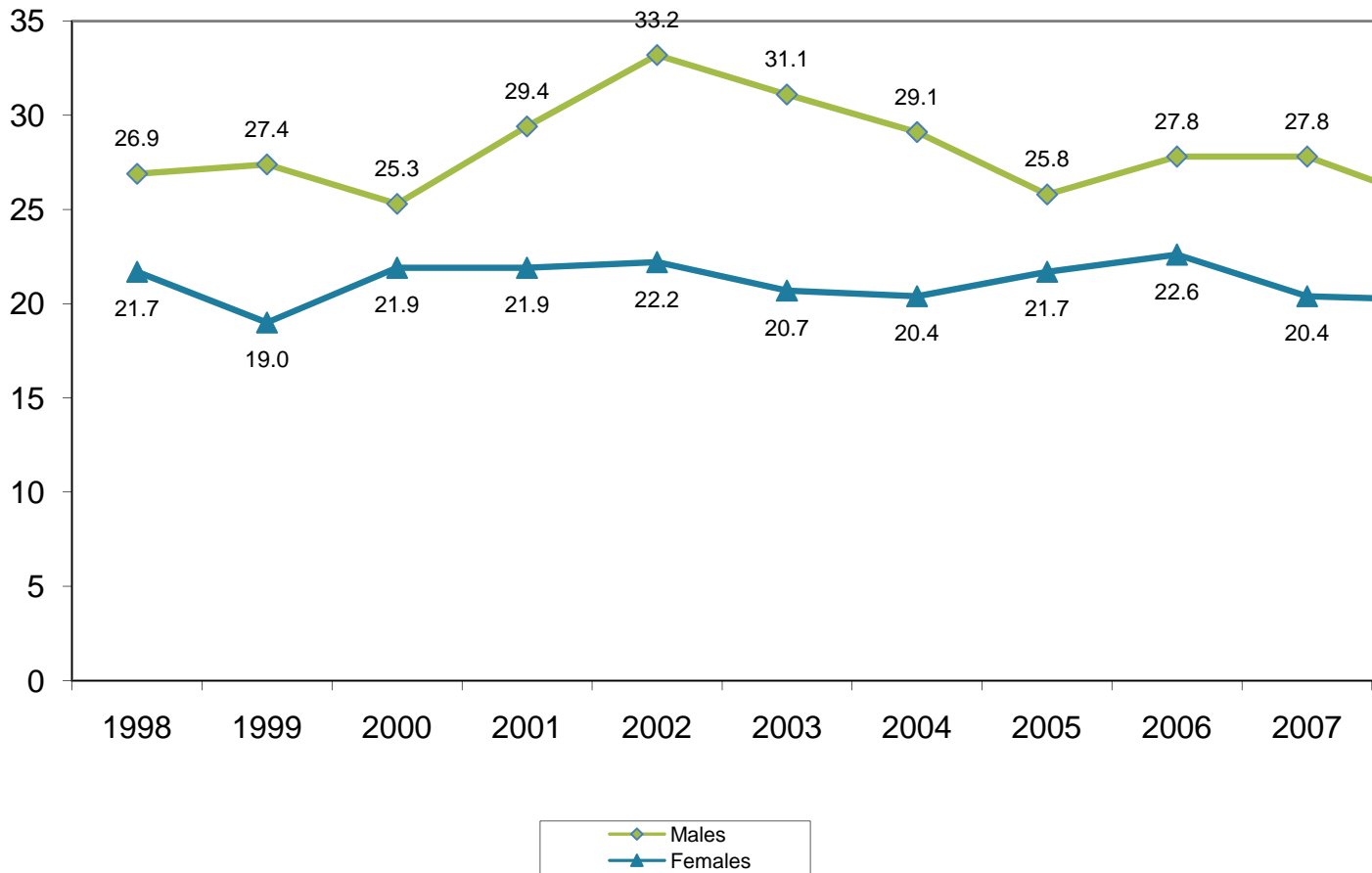
The BRFSS is a cross-sectional telephone survey conducted by state health departments with technical and methodological assistance provided by the CDC. Every year, states conduct monthly telephone surveillance using a standardized questionnaire to determine the distribution of risk behaviors and health practices among non-institutionalized adults. Adults 18 and over are asked to take part in the survey. Only one adult is interviewed per household. Data from Mississippi adults are available on the BRFSS website from 1995-2008.

## Current Adult Smokers - Mississippi BRFSS



From 1998 to 2001, the prevalence of smoking among Mississippi adults was the same as that of the US median. However, the US median has been lower since 2002.

### Current Adult Smokers By Gender - Mississippi BRFSS



Results from the BRFSS indicate that males are slightly more likely than females to be current smokers.

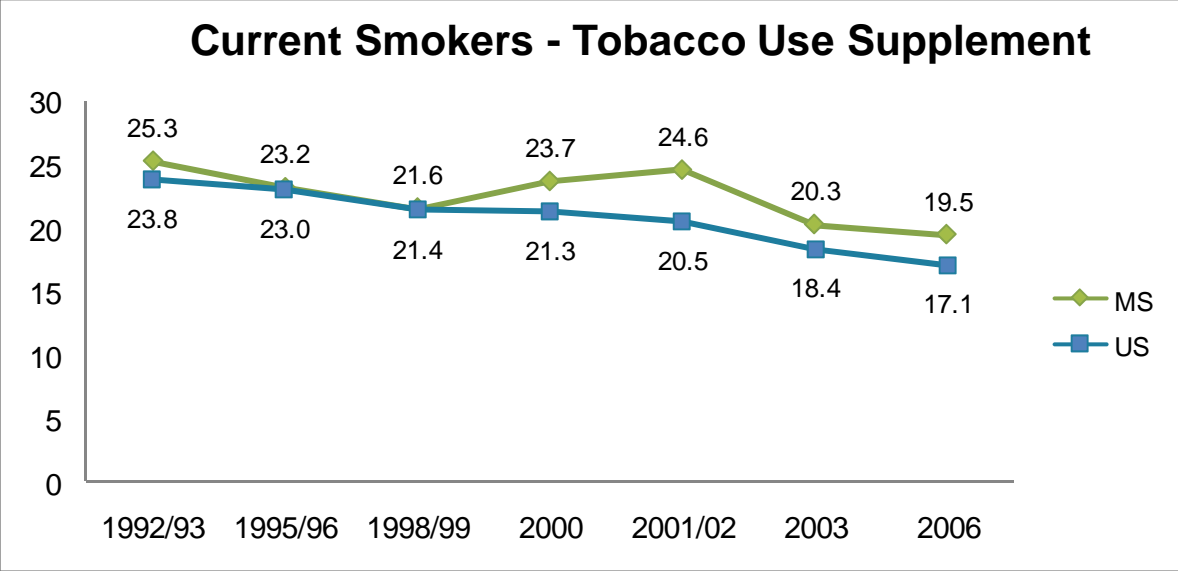
---

## **The Tobacco Use Supplement to the Current Population Survey**

The Tobacco Use Supplement to the Current Population Survey (TUS-CPS) is an NCI-sponsored survey of tobacco use that has been administered as part of the U.S. Census Bureau's Current Population Survey in 1992-1993, 1995-1996, 1998-1999, 2000, 2003, and 2006-2007. The TUS-CPS is a key source of national and state level data on smoking and other tobacco use in the U.S. household population because it uses a large, nationally representative sample that contains information on about 240,000 individuals within a given survey period. These data can be used by researchers to monitor progress in the control of tobacco use, conduct tobacco-related research, and evaluate tobacco control programs. Although the TUS-CPS has changed slightly between 1992 and the present, it has generally contained 40 items covering cigarette smoking prevalence, smoking history, current and past cigarette consumption, cigarette smoking quit attempts and intentions to quit, medical and dental advice to quit smoking, cigar, pipe, chewing tobacco, and snuff use, workplace smoking policies, smoking rules in the home, attitudes toward smoking in public places, opinions about the degree of youth access to tobacco in the community, and attitudes toward advertising and promotion of tobacco. The same files can also be used to assess trends in tobacco control efforts, including both formal workplace and home restrictions on smoking, and doctor/dentist advice to stop smoking. In 2003, a Special Topics questionnaire oriented toward tobacco cessation was fielded. Items focused on respondents' personal history of quit attempts over the preceding 12 months, level of nicotine addiction, and the nature of the quitting methods, products, and treatment information that respondents have used in order to attempt to quit, quitting history and methods used for both cigarette smoking and other forms of tobacco (cigars, pipes, chewing tobacco, and snuff), and information concerning the type of cigarette product used, and information related to harm reduction.

Currently available data files (1992-1993, 1995-1996, 1998-1999, 2000, 2001-2002, 2003 and 2006) can be used to track trends in tobacco use over time. Because of the large sample size for most survey items, analyses can be done at either the national or state levels, and in some cases, for areas smaller than the state level.

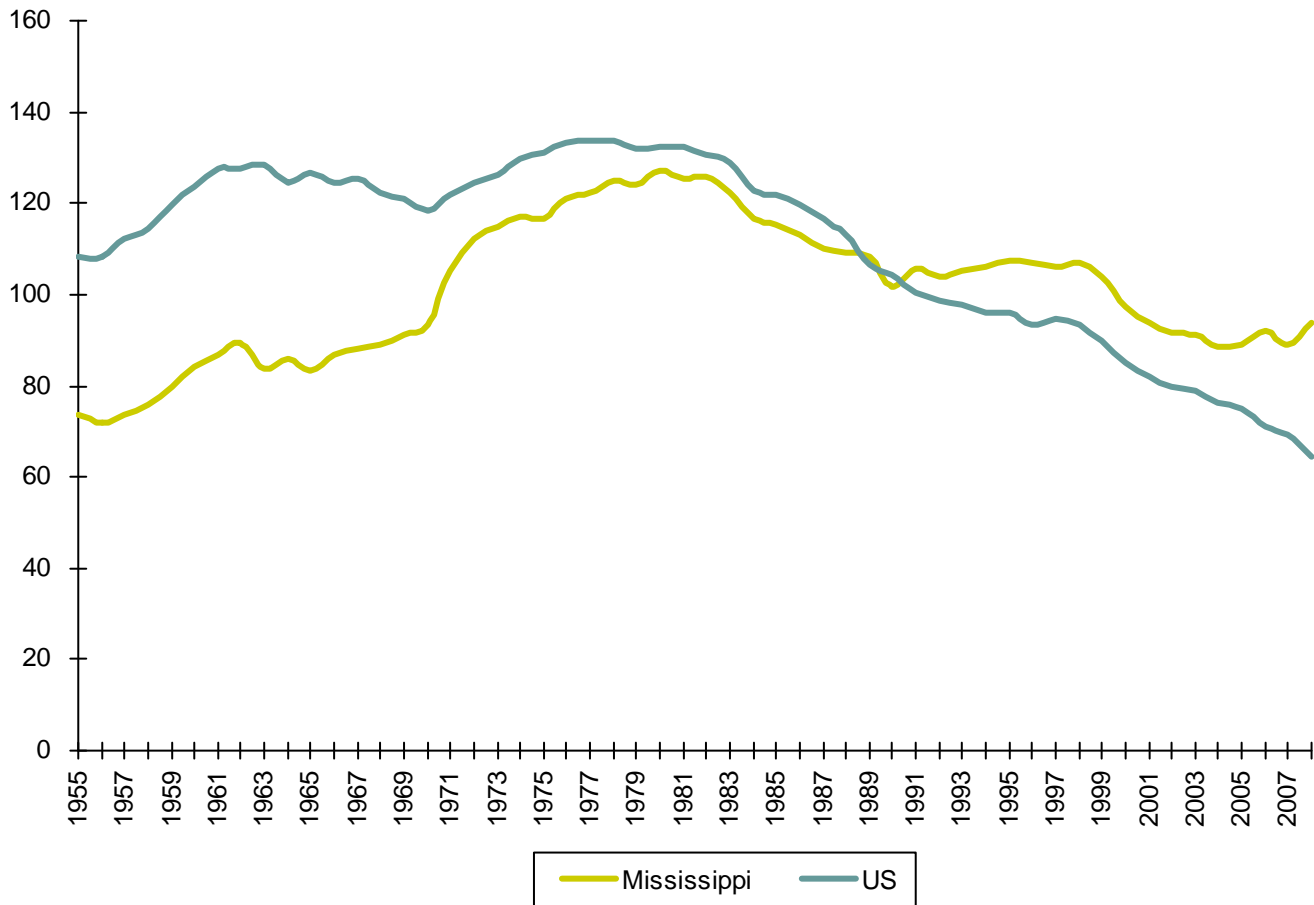
Current Smokers, Tobacco Use Supplement, Mississippi and US



For the first three administrations of the TUS, the prevalence of smoking among Mississippi adults was the same as that of the US. However, the prevalence of smoking in the US decreased after 2000.

### Per Capital Consumption - Tax Burden Report

The Tax Burden Report on Tobacco is published yearly and details tobacco revenue and industry statistics. Per capita consumption rates are available for each state from 1955-2008.



In 1955, Mississippians were purchasing and consuming substantially less cigarettes than the nationwide average. As the years progressed, the gap began to close and by 1987, Mississippi had caught up with the rest of the nation. Mississippi soon passed the average US per capita consumption.

**FOR FURTHER INFORMATION CONTACT**

**Robert McMillen**  
**robert.mcmillen@ssrc.msstate.edu**

**Social Science Research Center, [www.ssrc.msstate.edu](http://www.ssrc.msstate.edu)**  
**Mississippi State University, [www.msstate.edu](http://www.msstate.edu)**

**One Research Park, Suite 103**  
**Starkville, MS 39759**

**Phone: 662.325.7127**  
**Fax: 662.325.7966**

---

Mississippi State University does not discriminate on the basis of race, color, religion, national origin, sex, age, disability, or veteran status.

**For more information visit: [mstobaccodata.org](http://mstobaccodata.org)**