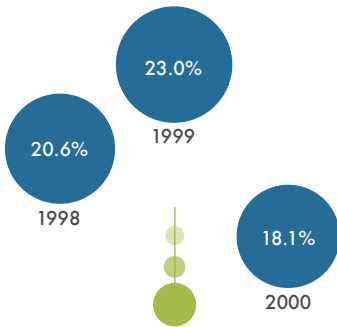


The 2010 Mississippi Youth Tobacco Survey

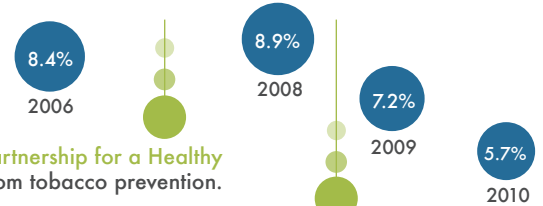
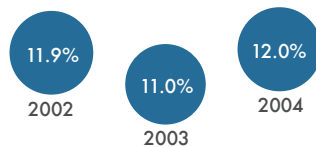
YOUTH SMOKING | 1998-2010

Current Smokers in MS Public Middle Schools



The Partnership for a Healthy Mississippi implements its tobacco control programs.

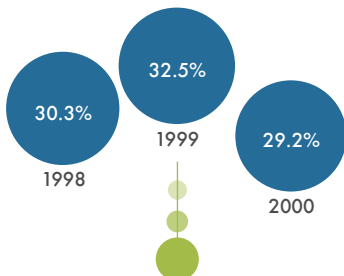
- In 2010, 6,388 Mississippi public middle school students were current smokers.
- The prevalence of current smoking has decreased by 72% since 1998, leading to 16,699 fewer young smokers.



State funding for The Partnership for a Healthy Mississippi is directed away from tobacco prevention.

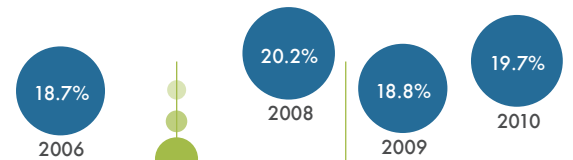
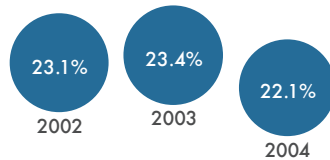
Comprehensive and statewide tobacco education, prevention, and cessation programs are implemented by the Office of Tobacco Control, Mississippi State Department of Health.

Current Smokers in MS Public High Schools



The Partnership for a Healthy Mississippi implements its tobacco control programs.

- In 2010, 26,879 Mississippi public high school students were current smokers.
- The prevalence of current smoking has decreased by 35% since 1998, leading to 14,463 fewer young smokers.
- In the past year, the prevalence of current smoking has not changed significantly.



State funding for The Partnership for a Healthy Mississippi is directed away from tobacco prevention.

Comprehensive and statewide tobacco education, prevention, and cessation programs are implemented by the Office of Tobacco Control, Mississippi State Department of Health.

2011

MISSISSIPPI Tobacco Data

BACKGROUND

The Centers for Disease Control and Prevention's (CDC) Office on Smoking and Health (OSH) provides technical assistance to the states to administer this survey. Mississippi has administered this survey in 1998, 1999, 2000, 2002, 2003, 2004, 2006, 2008, 2009, and 2010.

THE PURPOSE OF THE YTS is to provide states with the data needed to design, implement, and evaluate comprehensive tobacco control programs that work to prevent young people from beginning tobacco use and help those who have already started using tobacco to quit.

THE YTS COLLECTS DATA from young people in grades 6 through 12.

YTS DATA provide information on many key intermediate and long-term tobacco-related indicators, allowing states to measure progress toward state goals and objectives.

SAMPLE DESIGN

A multi-stage sample design was applied with public high schools selected proportional to enrollment size. Classrooms were chosen

randomly within selected schools and all students in selected classes were eligible for participation. Data were collected by means of an anonymous and confidential self-administered questionnaire. The questionnaires were group administered in classrooms during a normal class period by teachers following standardized procedures.

EDITING, WEIGHTING, AND INITIAL ANALYSIS OF DATA

The Research Triangle Institute and the CDC's Office of Smoking and Health provided technical assistance with the processing and weighting of the data. A weighting factor was applied to each student record to adjust for non-response at the school, class, and student levels. SUDAAN statistical software was used to calculate standard errors for estimates and 95 percent confidence intervals. Weight adjustments were made for the following:

WEIGHT = $W_1 * W_2 * f_1 * f_2 * f_3 * f_4$

W1 = inverse of the probability of selecting the school

W2 = inverse of the probability of selecting the classroom within the school

F1 = a school-level non-response adjustment factor calculated by school size (small, medium, large)

F2 = a class adjustment factor calculated by school

F3 = a student-level non-response adjustment factor calculated by class

F4 = a post stratification adjustment factor calculated by gender and grade

FOR MORE INFORMATION CONTACT

Robert McMillen, Ph.D.

ROBERT.MCMILLEN@SSRC.MSSTATE.EDU

Social Science Research Center

WWW.SSRC.MSSTATE.EDU

Mississippi State University

WWW.MSSTATE.EDU

One Research Park, Suite 103

P: 662.325.7127

Starkville, MS 39759

F: 662.325.7966

For more information visit

MSTOBACCODATA.ORG

